



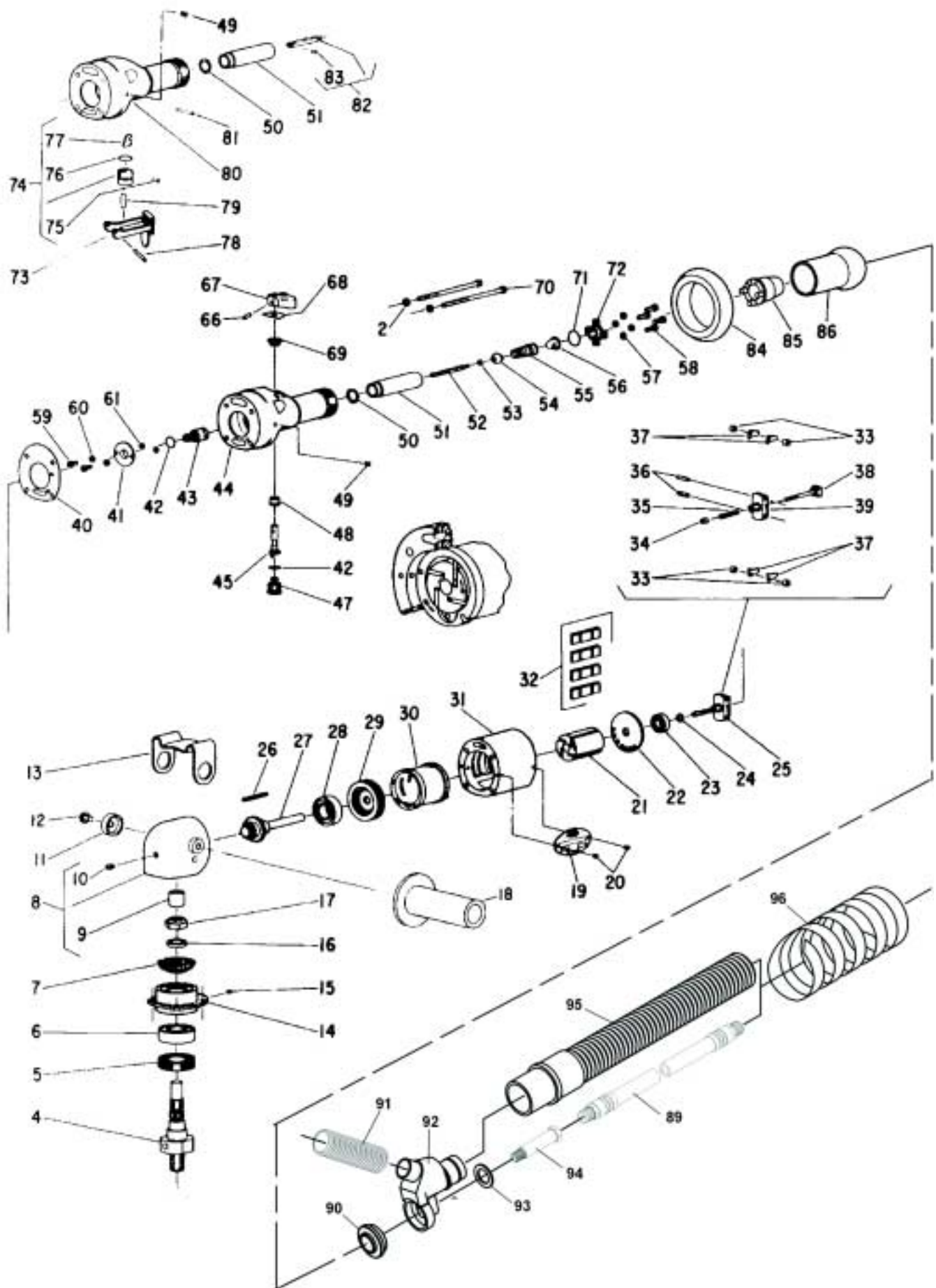
## **INSTRUCTIONS & PARTS LIST FOR 1287V, 1287LV, 1287VV, 1287LVV, & 1287LUV (SERIAL "E")**

1. The 1287V & 1287LV must be connected to an external vacuum source, such as a fixed dust collection system or an industrial vacuum system. The tool is equipped with a 1 1/4" diameter vacuum hose. The amount of material that is picked up is determined by the power of the vacuum system that is connected to the tool.
2. The 1287VV & 1287LVV generate their own vacuum and are designed to be used with a dust collection device such as the SIOUX 875 Dust Collection Container. They may also be connected to an external vacuum source such as a fixed dust collection system or a heavy duty vacuum cleaner, such as a SIOUX 870. The tool is equipped with a 1 1/4" diameter vacuum hose.
3. Do not rest tool on the brushes. This will cause them to bend and "Take a set" reducing pick-up efficiency. Store tool on it's back when not in use.
4. Be alert to any fire hazards which may occur, especially in the hose and dust container.
5. Operation of this tool on certain materials and under certain conditions such as low humidity may cause a build up of static electricity in the tool. If this condition exists, attach a ground wire to the inlet cap on the tool and attach the other end to a suitable ground. Also, the factory may be consulted for other grounding methods.

**SIOUX  
TOOLS INC.**

2901 FLOYD BOULEVARD ■ PO BOX 507 ■ SIOUX CITY, IOWA 51102-0507 USA ■

Printed In U.S.A.



# INSTRUCTIONS & PARTS LIST FOR

## 1287V, 1287LV, 1287VV, 1287LVV, & 1287LUV

### (SERIAL "E")

Fig. No.	Part No.	Description	Fig. No.	Part No.	Description
2.	09724	Washer—Lock (4)	45.	43253	Ass'y—Crank & Pin
4.	22945	Spindle—Tool	47.	44389	Stop.
5.	23017	Seal—Oil	48.	44390	Bushing—Inner
6.	10244	Bearing—Ball	49.	30375	Fitting—Grease
7.	19719	Ass'y—Rotor Spindle & Gear (Incudes. Fig. 27)	50.	14755	Gasket—Inlet
8.	43227	Case—Gear	51.	44391	Sleeve—Valve
9.	10023	Bearing—Needle	52.	44434	Rod—Valve
10.	30356	Fitting—Grease	53.	35119	Washer
11.	44421	Washer—Clamp	54.	14372	Valve
12.	08650	Screw	55.	41285	Spring—Valve (Thumb Throttle)
13.	35114	Rest—Tool	56.	33993	Screen—Air
14.	11553	Support—Bearing	57.	09712	Washer—Lock (4)
15.	06404	Screw—Set	58.	06573	Screw (4)
16.	54439	Spacer	59.	06325	Screw (2)
17.	09693	Nut—Elastic Stop	60.	09704	Washer—Lock (2)
18.	63349	Handle—Side	61.	14750	Retainer—Screw (2)
19.	20357	Plate—Name	66.	34694	Pin—Trigger
20.	06000	Screw (2)	67.	53440	Trigger
21.	44220	Rotor	68.	35334	Plate—Wear
22.	10520	End Plate—Rear	69.	44378	Bushing—Outer
23.	10241	Bearing—Ball	70.	07129	Screw (4)
24.	35067	Washer—Wave	71.	14281	Ring—"O"
25.	43672	Ass'y—Governor	72.	44388	Cap—Inlet (1287V, 1287LV, 1287LUV)
	43669	Ass'y—Governor (4500 RPM)		66154	Cap—Inlet (1287VV, 1287LVV)
26.	44219	Key—Rotor	73.	63163	Ass'y—Lever Lock
27.	19719	Ass'y—Rotor Spindle & Gear (Includes. Fig. 7)	74.	43323	Ass'y—Plunger Guide & Bell Crank
28.	10243	Bearing—Ball	75.	34819	Pin
29.	10531	End Plate—Front	76.	14309	Ring—"O"
30.	43022	Ass'y—Cylinder & Pin	77.	35123	Crank—Bell
31.	12276	Housing (Front Exhaust)(1287V, 1287LV, 1287LUV)	78.	30459	Pin
	12291	Housing (Rear Exhaust)(1287VV, 1287LVV)	79.	40142	Pin
32.	33997	Vane—Rotor (Set of 4)	80.	12298	Handle—Lever Throttle
33.	44379	Spacer—Governor Weight (4)	81.	30219	Pin—Roll
	44218	Spacer—Governor Weight (4)(4500 RPM)	82.	44476	Rod—Valve
34.	13183	Nut—Governor Adjusting	83.	30273	Pin—Roll
35.	21411	Spring—Governor (Red)	84.	14275	Protector—Rubber
36.	30336	Pin—Roll (2)	85.	04207	Cover—Hose (Front Exhaust)
37.	35069	Weight—Governor (4)(1287V, 1287LV, 1287VV, 1287LV) (6)(1287LUV)	86.	14063	Cover—Handle (Front Exhaust)
38.	43666	Ass'y—Bearing Support & Spindle	89.	1376	Ass'y—Leader Hose
39.	44222	Frame—Governor	90.	66127	Spacer—Extractor
40.	14751	Gasket (Front Exhaust)	91.	66128	Hose—Connector
	14756	Gasket (Rear Exhaust)	92.	66155	Ass'y—Extractor
41.	44245	Retainer—Governor Valve	93.	25206	Washer
42.	14312	Ring—"O" (2)	94.	66126	Adaptor—Inlet
43.	43664	Valve—Governor	95.	874	Hose—Vacuum
44.	43228	Handle—Thumb Throttle (Includes. Fig. 48, 49 & 69)	96.	65844	Wrap—Spiral
			NOT SHOWN		
			63169 Ass'y—Lever Handle Kit (Includes Figs. 49 & 50, 73 thru 83)		

\*Order Quantity As Required

**FURNISH CATALOG, SERIAL, AND MODEL NUMBER WHEN  
ORDERING PARTS**

# INSTRUCTIONS & PARTS LIST FOR 1287V, 1287LV, 1287VV, 1287LVV, & 1287LUV (SERIAL "E")

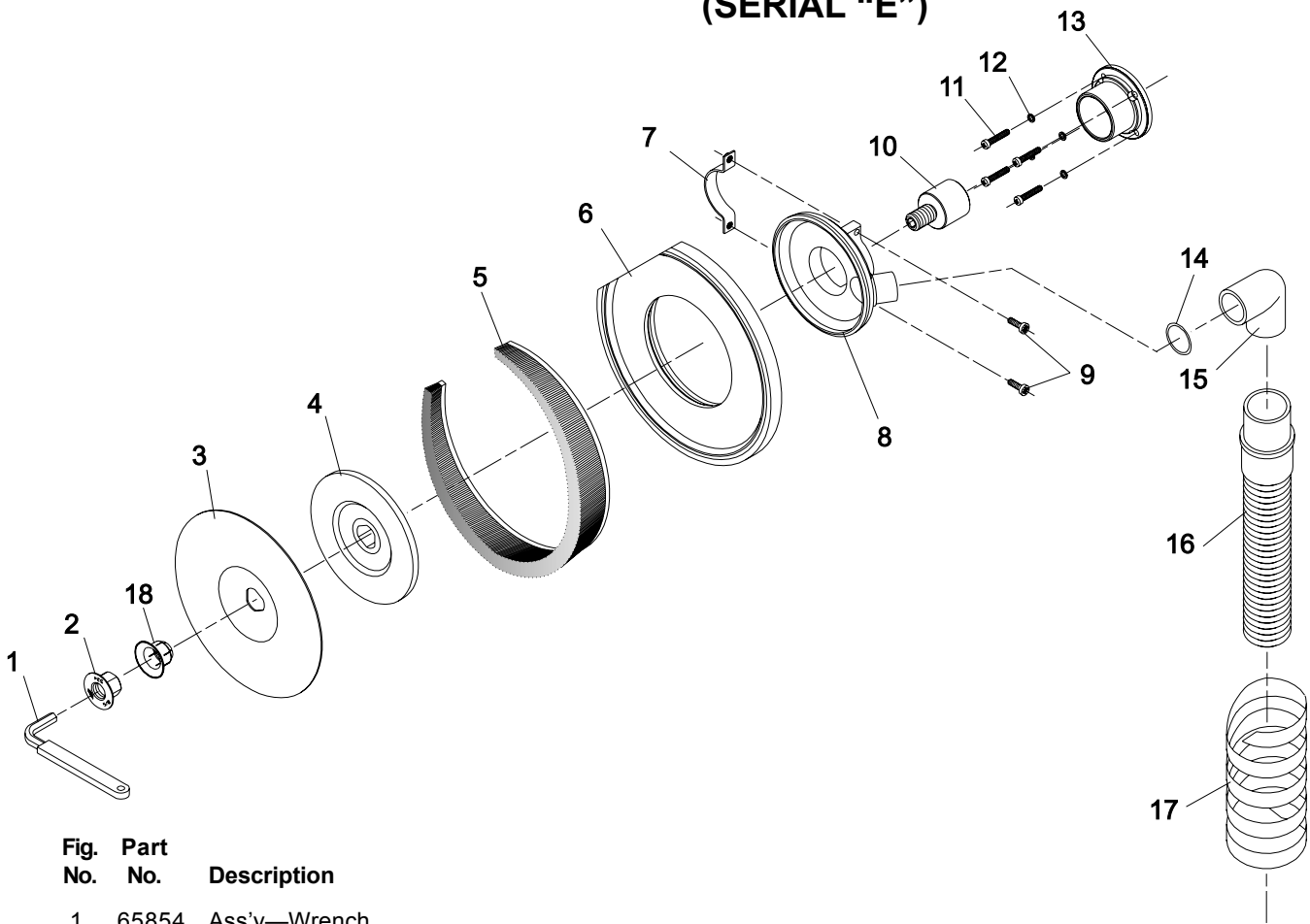


Fig. No.	Part No.	Description
1.	65854	Ass'y—Wrench
2.	524	Nut—Lock
3.	548	Pad—Disc
4.	544	Ass'y—5" Sanding Disc Holder (Includes Fig. 2)
5.	65821	Brush—Vacuum Shroud
6.	65820	Shroud—Brush
7.	65852	Ass'y—Clamp
8.	65861	Ass'y—Vacuum Shroud
9.	07245	Screw—Pan Head (Self- tapping)(2)*
10.	65437	Adapter—Spindle
11.	07119	Screw (4)*
12.	09724	Washer—Lock (4)*
13.	65436	Adapter—Shroud
14.	65934	Ring—"O"
15.	65895	Adapter—Vacuum Hose (1290V)
16.	874	Hose—Vacuum
17.	65844	Wrap—Spiral
18.	542	Retainer

\*Order Quantity As Required

FURNISH CATALOG, SERIAL, AND MODEL NUMBER WHEN  
ORDERING PARTS

## This image shows a full page of blank, lined paper. It features approximately 28 evenly spaced horizontal grey lines across its entire width, providing a guide for handwriting or typing. The background is a clean, solid white color.



**⚠ WARNING**



Some dust created by power sanding, sawing, grinding, drilling, and other construction activities contains chemicals known to cause cancer, birth defects or other reproductive harm.

**⚠ ADVERTENCIA**



El polvo generado al lijar, aserrar, afilar, taladrar y realizar otras tareas de construcción contiene sustancias químicas que podrían causar cáncer, malformaciones congénitas y otras alteraciones del aparato reproductor.

**SIoux  
TOOLS INC.**

2901 FLOYD BOULEVARD ■ PO BOX 507 ■ SIOUX CITY, IOWA 51102-0507 USA ■

Printed In U.S.A.